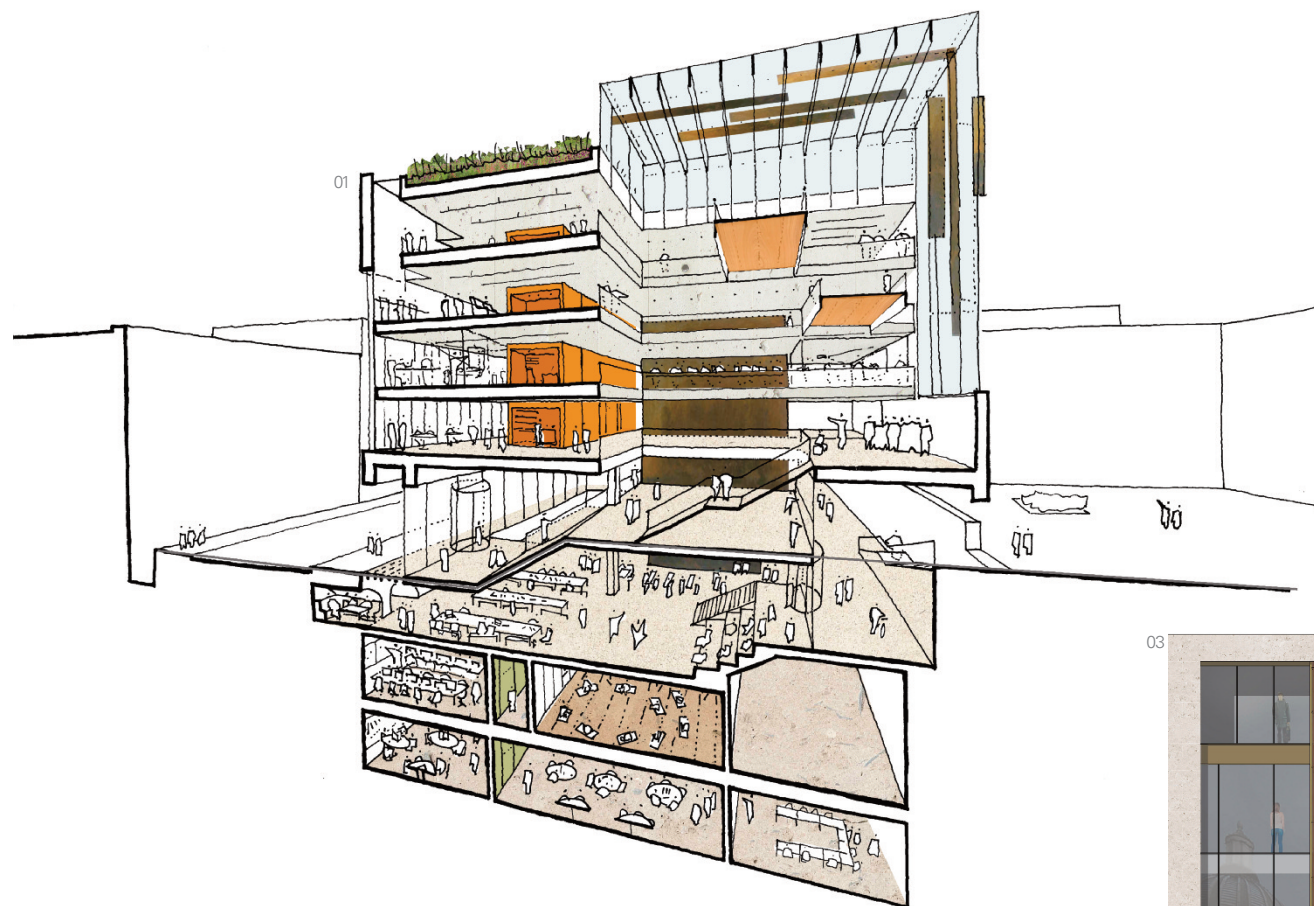


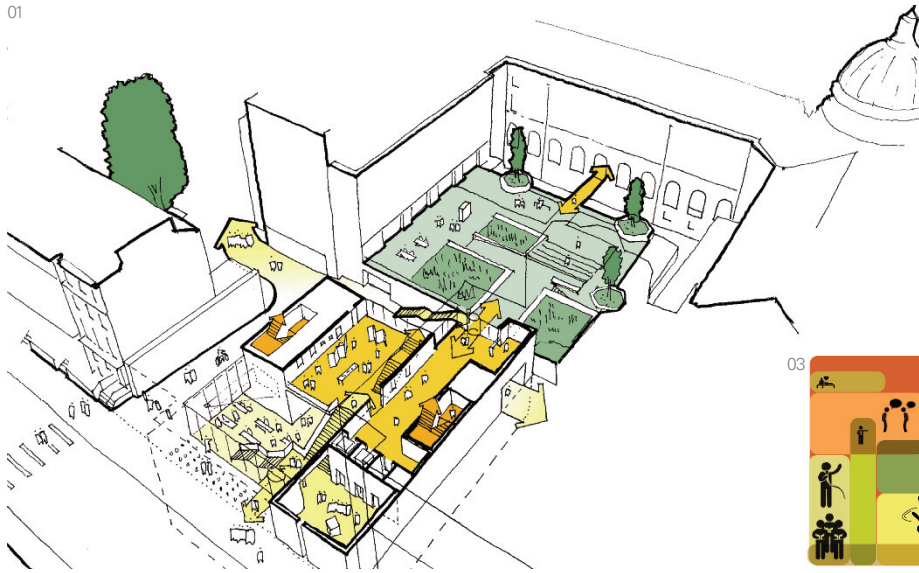
As one of the consultants on UCL's major projects framework, we were selected through a competitive design and interview process, to lead the initial design of the New Student Centre. The strategic study, which spanned over fifteen months, allowed the development of the brief and design of much needed space for self guided study on the Campus. The exploratory design for the New Student Centre also considered unlocking wider opportunities and connections on the last vacant site on the main UCL Campus in Bloomsbury.

The building combines an number of functions; a new campus entrance which also forms a public 'grand foyer', the resolution of confusing changes of level within and adjacent to the building and a range of student focused functions which support an enhanced space provision for the UCL student community.



- 01 Sectional sketch section, through main lightwell connecting entrance foyer with Japanese garden.
- 02 Material study - mixed beds of Portland stone.
- 03 Garden elevational study

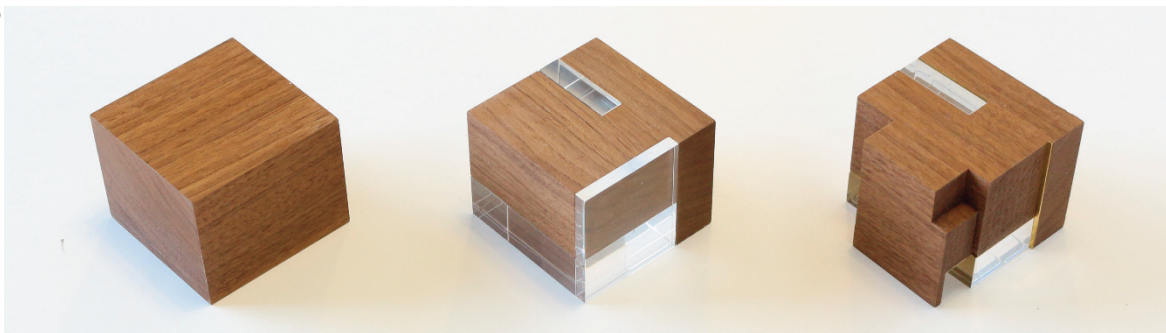
01



04



05



- 01 Cut away plan, showing entrance foyer level and connection to above, below and through.
 02 Gordon Street elevational study.
 03 Diagrammatic plan of mixed functions.
 04 Internal visualisation of one of the rooms overlooking the Wilkins Dome.
 05 Conceptual models of building form.

Total Area : 5,500sqm
 Local Authority : Camden

PM : Mace
 QS : Aecom (Davis Langdon)
 Structural Engineer : Curtins
 M & E Engineer : BDP
 Sustainability Consultant : Expedition
 Landscape Architect : Turkington Martin
 Planning Consultant : Deloitte Real Estate

The studies were informed by extensive consultation and engagement with students and the learning spaces team, through workshops, questionnaires and reference visits to define the range of spaces to cater for undergraduate and postgraduate needs.

Our studies evaluated options to test the inclusion (or not) for a range of potential space types within the project including: major new lecture facilities, learning spaces from small to large, spaces for the UCL's student societies and clubs, rehearsal suites, AV & digital editing suites, facilities for cyclists, a range of catering offers, roof gardens incorporating prototype testing areas, function rooms, student services, careers, registry, seminar and teaching spaces and exhibition spaces for curated exhibition areas to display academic output whether arts or science and the blurred boundaries between the two.

The proposals provide a landscape of spaces, for individual and group study in a range of rooms which vary in size, orientation, outlook, scale and proportion, arranged over 3 levels of basement and 5 levels above ground. This approach offers adaptability through the principles of long life, loose fit and low energy, designed to BREEAM Outstanding and meeting a number of the aims of the 2011 masterplan. The building is clad in Portland stone, giving presence, gravitas and an enduring quality, inspired by the longevity of the original Wilkins building and adjoining Cloisters.