

ArchitecturePLB are undertaking a number of projects with City University under their Consultants Framework. The projects illustrated here have all been developed to feasibility stage, each is a discrete project, though integrated into the broader 2012–2017 campus masterplan.

### Hub Project

The Hub project examined the feasibility of remodelling an existing Graduate Study Centre into a 250 place lecture theatre. Following detailed stakeholder consultation where different lecture theatre models were discussed, we developed an innovative blended model combining lecture and group study space.

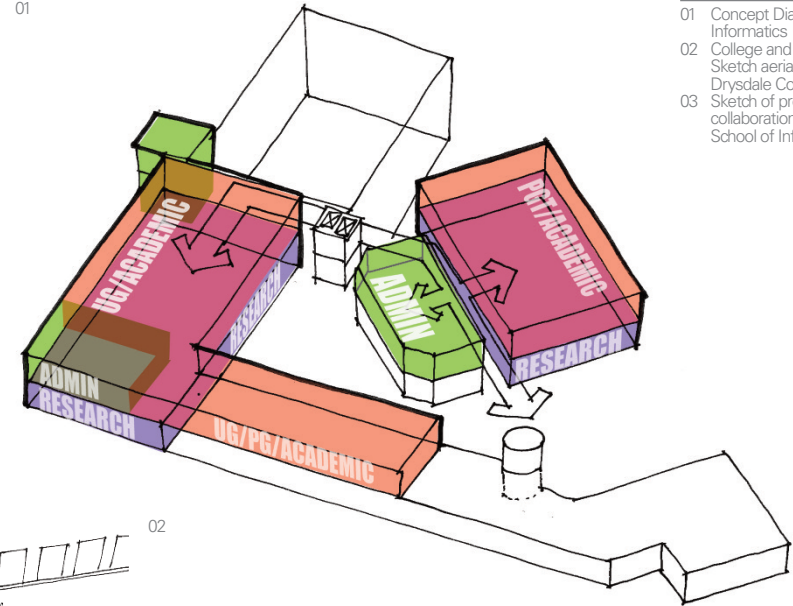
### College and Drysdale Link

The College and Drysdale Link project examines the potential for a currently underused external space to become an exciting new destination and a key component in achieving improved connectivity across the site. As well as providing connections between several campus buildings, the new Drysdale Court would also serve as a space for external study, socialising, special events, performance, film projections, and external dining combined with a remodelled catering area. By paying attention to both the specific and non-specific academic activities, a more vibrant and coherent campus will be created.

### School of Informatics

The School of Informatics is located on the top two floors of a Grade II listed building. Our study considered how the spaces could be reordered to create a more collaborative learning environment, and were informed by in-depth discussions with both academic staff and students and precedent visits. Following an options appraisal, the final proposals include the reorganisation of the School along functional rather than departmental lines, the opening up of space to improve connections and visibility, the insertion of new fully glazed collaboration spaces and a new arrival point, all contributing to an enhanced sense of purpose and identity for the School.

01

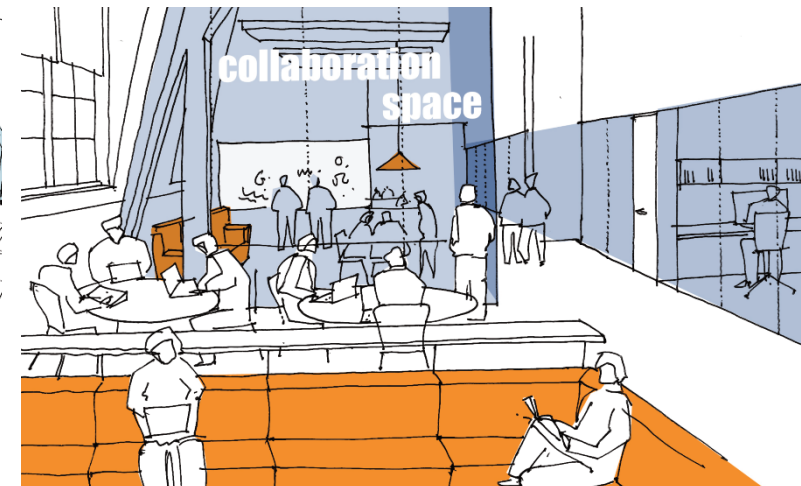


- 01 Concept Diagram for School of Informatics
- 02 College and Drysdale Link - Sketch aerial of proposed Drysdale Court
- 03 Sketch of proposed collaboration space in the School of Informatics

02



03



ArchitecturePLB were shortlisted to submit design proposals for a new academic building for City University. The Sebastian Street project called for the complete redevelopment of an under-utilised site to create a new flagship building on the edge of the campus, signposting the University's presence onto Goswell Road and helping to reinforce it's identity as a global reaching institution right in the heart of London.

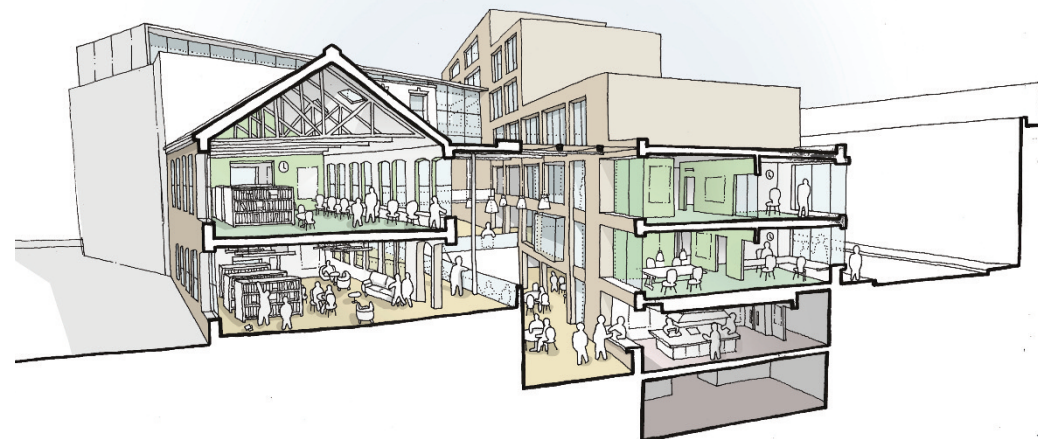
Our proposals seek to capitalise on the physical and heritage character of the site through the re-use of an existing Victorian warehouse to provide a new postgraduate Library. This is juxtaposed with a new build, efficient and highly flexible academic building comprising 6500m<sup>2</sup> of space that can be adapted to suit different spatial configurations and patterns of use. The new and existing buildings are united around a light filled central atrium, providing an extremely rich but nevertheless legible and functional arrangement, and a memorable new place for students and staff to gather.

Working closely with Buro Happold, this approach underpinned a highly sustainable and low carbon solution. The re-use of an existing building, a high performing external fabric, and a pragmatic approach to environmental strategies, including the use of ground source cooling, all contributed to a preliminary assessment rating of BREEAM "Excellent".



01

- 01 New and existing buildings gathered around central atrium
- 02 Sketch section through atrium



02