

This is a small project with a campus-scale impact. It demonstrates how targeted spending and considered design can maximise the potential of neglected or forgotten spaces. It is an exemplar of a fundamental sustainable principle - a 'more-for-less' approach to the retrofit of existing building stock, adding value to an existing asset and reducing energy use.

The project involved conversion of a loading bay and separate undersized entrances to create a single generous reception space. Yet this scheme delivers more than the sum of its parts, giving a new lease of life to the entire 1970s office complex and the campus around it.

Where people once hurried through small lobbies, generous places have been created. The original entrances have been transformed into lift lobbies with new frameless glazing and multi-media displays, each acts as a shop window for the research departments that occupy the building. New seating transforms these spaces into informal meeting areas. Space has been found for a small café, a focal point drawing the public in and promoting engagement with the LSE and its activities.

Building users now enjoy an inspiring environment that supports interaction and collaboration and boldly defines the whole building as a world-leading research centre.



02



01

- 01 Building entrance in pre-existing condition
- 02 Strong connection to the street
- 03 ArchitecturePLB designed public realm improvements to compliment the new entrance

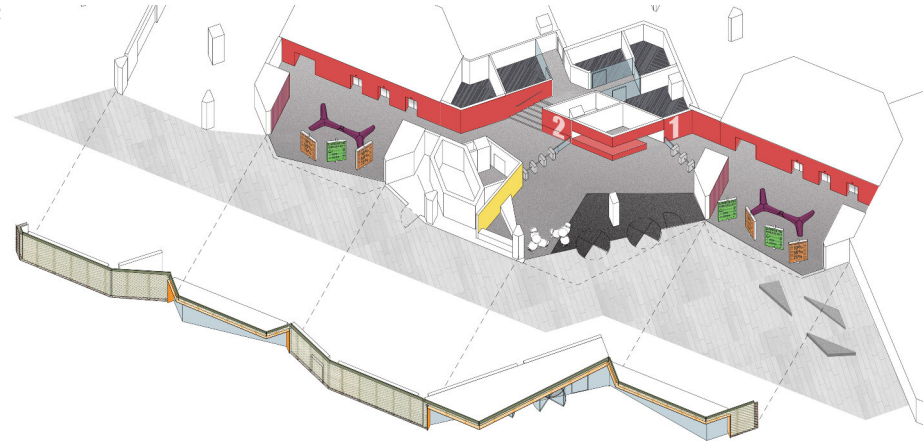


03

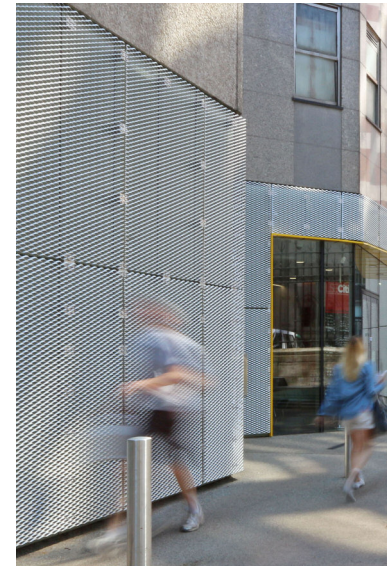


01

02



03



Total Area : 375m²
Procurement Type : Design and Build
Local Authority : City of Westminster Council
Planning Approved : March 2012
Construction Timescale : May 2012 - November 2012

Contractor : 8Build
Structural Engineer : Alan Baxter Associates
M & E Engineer : CBG

ArchitecturePLB's design blurs internal and external, transforming Clements Inn into a vibrant space with a fresh visual identity that is distinctly LSE.

At the rear of the internal space a bold line of back-painted glass in signature LSE red links the spaces together and forms a backdrop to the activity and exhibition display. Externally an over-cladding of silver-anodised aluminium mesh creates a continuous veil covering the various existing elevation conditions. The innovative material palette is a distinctly urban response to a difficult, north-facing context yet the final composition pairs a practical robustness with delicacy and lightness.

The project was a finalist in the Architects' Journal Retrofit Awards 2013.

Client Testimonial

"I have walked down Clements Inn for the last five years. Usually I keep my eyes down to avert the drab and visually negative experience. Over the last few weeks I have been intrigued by the gradual but steady transformation. The ground plane has become pleasant. The planting is sensitive and warm. There are places to sit and see the world go by. The colours and simplicity of the new entrance architecture makes a grey mess look bright, welcoming and clear. There is a real sense that we will all feel uplifted rather than depressed when we walk into the reborn towers. This is what good and simple design can do. As an architect and urbanist, I really welcome the initiative and congratulate the Estates team and the architects."

04



- 01 Lift lobbies are now generous spaces for waiting and informal learning
- 02 Exploded axonometric
- 03 Materials palette
- 04 The tone and texture of the new anodised aluminium mesh cladding compliments the existing bush hammered concrete
- 05 Full-height glazing unites previously disparate spaces, animating the street with light colour and movement

05