

Southampton Crossings

527 bed student accommodation scheme
at the heart of Southampton City Centre
overlooking Watts Park.

Contract Value £30m
Client Host



Project Title Southampton Crossings,
Cumberland Place, Southampton
Client Host
Completion September 2020
Contract Value £30m

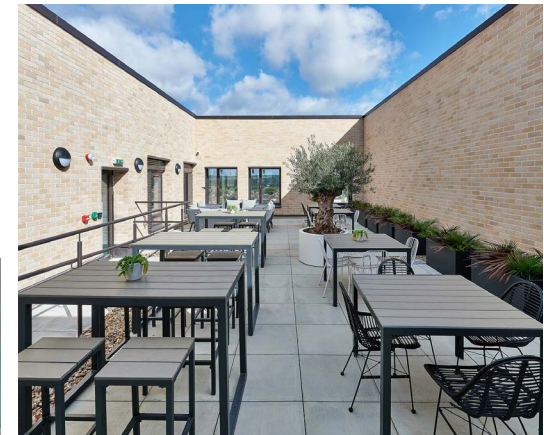
ArchitecturePLB were approached by student housing provider and repeat client HOST to design a new purpose-built student accommodation scheme on a prominent site at the heart of Southampton City Centre.

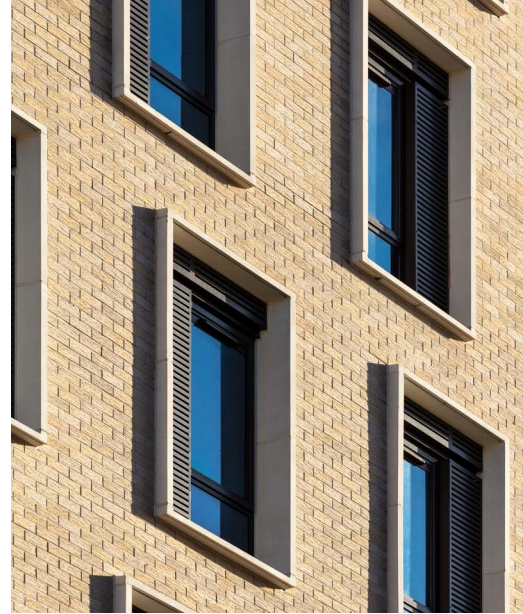
Having completed multiple projects on the edge of Southampton's listed parks including 2 major student residences we were ideally placed to take on this project. With our in-depth knowledge of the sector and understanding of the context, ArchitecturePLB have delivered a well-designed building which responds to the nearby listed park and has an active frontage onto Cumberland Place, whilst still unlocking the site's full capacity.

The building is made up of three blocks forming a 'C' shaped plan around an open courtyard. This layout maximised the amount of natural light into study bedrooms and created outdoor space on a constrained urban site.

Ground floor retail units and extensive communal student facilities on the first floor provide an active frontage onto Cumberland Place. A key element of the building base is a double height colonnade which wraps the principle corner defining the buildings entrance route.

The ground floor provides extensive communal facilities including social spaces, study rooms and a gym. A roof terrace on the 11th floor also provides sheltered outside space.





The scheme's three blocks are expressed with different materials and elevational treatments, to further articulate the form and relate to the context. The courtyard elevation employs a white glazed brick, to provide a crisp, light appearance to the courtyard. This element links the two main wings, clad in brickwork this stone window surrounds and detailing.

The white facade also provides a clean background for the colourful and interactive courtyard art designed by Artist duo Denman and Gould.

Student accommodation requires buildings with cellular spaces, a single room for each occupant. In turn each room requires a window for air, ventilation and views out. As a result the elevations tend to have multiple windows of a very similar size. At Southampton Crossings the windows have been placed in to framed bays, to provide an ordered and composed façade, fitting for a civic building on a very prominent street frontage facing the park.

In terms of sustainability the building was designed to achieve BREEAM excellent. The focus has been on a fabric first approach to reduce heat loss. The scheme incorporates elements of prefabrication. The brickwork facades are formed using a panelised slip system and the bathroom pods were manufactured off site in factory conditions where through repetition and careful design, waste can be minimised.